

# REQUEST FOR PROPOSALS (RFP) - FOOD SERVICE OPERATORS

**Dated:** June 11, 2025

**PROJECT OWNER:** Toledo Lucas County Public Library Board of Trustees

**PROJECT NAME:** 2025 Main Library Café

**PROJECT LOCATION:** 325 N. Michigan Street, Toledo, Ohio 43604

**PROPOSAL SUBMISSION DEADLINE:** 12:00 p.m. (local time), July 7, 2025

## **CONTACT INFORMATION:**

Mike Graybeal - Director of Operations

[mike.graybeal@toledolibrary.org](mailto:mike.graybeal@toledolibrary.org)

419-259-5309

---

## 1.0 BACKGROUND AND PROJECT OBJECTIVES

The Toledo Lucas County Public Library (TLCPL) seeks proposals from dynamic, purpose-driven organizations—including innovative food service operators, educational institutions, training providers, entrepreneurial ventures, non-profits, and socially conscious enterprises—to lease and operate a fully equipped café space on the first floor of the Main Library in downtown Toledo.

This initiative represents a significant opportunity beyond a standard commercial lease. TLCPL aims to establish an innovative partnership that aligns with its mission and values, fostering mutually beneficial community connections. The Main Library, a vibrant hub employing nearly 200 staff and serving an estimated 12,000 customers weekly, has a unique opportunity to launch a new or existing enterprise within Toledo's revitalizing downtown, driven by substantial investments and development initiatives.

### **The primary objectives for this project are:**

- To secure a café operator capable of providing quality food and beverage services to the Library's diverse audience of visitors and staff.
- To establish a partnership with an operator whose values and practices align with TLCPL's commitment to innovation, sustainability, and community enrichment.
- To leverage the Library's café space to support local enterprise and contribute positively to the downtown ecosystem.

The selected operator must be prepared to move into the café space and obtain all necessary licensure, permitting, and required inspections to commence operations in 2025. TLCPL strongly encourages proposals demonstrating creativity, operational

excellence, and a clear commitment to a partnership benefiting the operator, the Library, and the broader community.

## 2.0 PROPOSED SCOPE OF SERVICES

The selected operator may consider the following as part of the exclusive rights to the café/equipment and should discuss each element below in their proposal:

1. **Food and Beverage Offerings:** Provide reasonably priced, high-quality healthy items, including:
  - a. Freshly brewed coffee (e.g., espresso, cappuccino, etc.)
  - b. Cold beverages
  - c. Salads, sandwiches, and family-friendly snacks (e.g., bagels, baked goods, nutritional bars).
2. **Catering:** Operators are encouraged to propose innovative approaches to offering catering solutions, supporting events and meetings locally and/or regionally. The Operator should outline their ability to support catering services from the proposed space. This includes details on kitchen facilities, storage capacity, and compliance with local health and safety regulations.
3. **Compliance:** Operator shall adhere to all applicable Federal, State, County, and City laws, including Health Department regulations. Additionally, Cafe Operator shall adhere to all Library policies and procedures - including safety protocols and comply with directives from Library staff and public safety officers.
4. **Operations:** Operate from a predefined space equipped by the TLCPL (details in Exhibit A) and maintain the space and equipment in an orderly fashion, including cleaning, maintenance, and general upkeep.
5. **Hours of Operation:** Hours are negotiable based on mutual agreement. Suggested hours are:
  - a. Mon–Fri: 11a.m. - 2 p.m.
  - b. Sat/Sunday - Closed
6. **Community Impact:** Demonstrate alignment with TLCPL’s mission and values, emphasizing inclusivity, innovation, and accountability.
7. **Financial Stability:** Provide a minimum of 3 years evidence of financial responsibility and reliability. Upon review, additional information may be requested.
8. **Inclusive Hiring:** Outline Operators methodology for hiring staff and/or volunteers. Proposals that prioritize creating opportunities for individuals with barriers to employment (e.g., youth, individuals with disabilities) may receive additional consideration.

## 3.0 SCHEDULE OF EVENTS

Issue RFP	6/11/2025
Pre-proposal Meeting/Walkthrough	6/27/2025

Questions/Clarifications deadline	7/2/2025 <u>by 5 p.m.</u>
Proposals due	7/7/2025 <u>by 12 p.m.</u>
Cafe Operator Shortlist	7/9/2025
Cafe Operator Meetings	7/14/2025
Cafe Operator Selection	7/30/2025

## 4.0 PROCUREMENT PROCESS

### 4.1 Communications Protocol

All questions concerning this RFP must be submitted in writing to Mike Graybeal at [mike.graybeal@toledolibrary.org](mailto:mike.graybeal@toledolibrary.org). Responses to questions may be shared with all Proposers via an addendum, at the discretion of TLCPL.

### 4.2 Submission of Proposals

Interested individuals or firms must submit **five hard copies of the proposal and one electronic copy in PDF format** on a flash drive, in a sealed envelope. The envelope shall be plainly marked on the outside "**TOLEDO LUCAS COUNTY PUBLIC LIBRARY FOOD SERVICE OPERATORS – 2025 MAIN LIBRARY CAFE**".

Proposals must be submitted to the following address before the deadline above.

Toledo Lucas County Public Library  
Dispatch Office  
ATTN: Mike Graybeal, Director of Operations  
325 North Michigan Street  
Toledo, OH 43604

**Hand deliveries must be made between Monday through Thursday from 9:00 a.m. to 8:30 p.m. and Friday and Saturday from 9:00 a.m. to 5:30 p.m. Respondents are responsible for confirming current dispatch office operating hours at (419) 259-5200.**

TLCPL reserves the right to waive any defect or technicality in any proposal received or to eliminate any firm that submits an incomplete or inadequate proposal or that is not responsive to the requirements of this RFP.

Late submissions may not be considered and are at the discretion of TLCPL.

## 5.0 PROPOSAL REQUIREMENTS

To apply for consideration, submit a proposal expressing from a culinary, community impact, and business management perspective, the capability of your organization to best meet the needs identified within this request for proposal. Include the following:

1. **Business Information:**
  - a. Legal name and address of the business.
  - b. Contact information for the operator and/or representative.
2. **Licensing and Insurance:**
  - a. Copy of business license.
  - b. Proof of insurance.
3. **References:** Provide at least three references, including names, email addresses, and phone numbers.
4. **Proposed Scope of Services:** Discuss each element in section 2.2 - Proposed Scope of Services in their proposal.
5. **Sample Menu:** Include a detailed list of proposed items, sizes, and prices for coffee, lunch items, and snacks.
6. **Lease:** Specify your preferred lease model and any potential shared opportunities.
7. **Unique Qualities and/or Expertise:** Identify the unique competence, qualities, and/or expertise that set you and your team apart from others. Highlight your unique qualifications, past successes, and the value your services or products would bring to this project.
8. **Management Resumes:** Resumes of key management staff.
9. **Financial Information:** Financial documentation to verify stability and reliability.
10. **Authorized Signer:** The proposal must be signed by an official who is authorized to make legally binding decisions for the organization.

## 6.0 EVALUATION & SELECTION

Respondents submitting proposals will be evaluated and TLCPL will select and rank at least three which it considers to be the most-qualified to provide the café services outlined within. However, if TLCPL determines that fewer than three qualified firms are available, it will select and rank those firms. TLCPL may require additional information from one or more Respondents to supplement or clarify the proposal submitted. The shortlisted respondents may be asked to meet with TLCPL representatives to present the qualifications and proposed approach for the Project before final ranking and selection is made. The individual team members that will be involved with the Project must attend such meeting. TLCPL will select the Operator determined to be most qualified to provide the services requested for the Project.

TLCPL reserves the right to take any action affecting the RFP process or the Project that it deems to be in its best interest.

### **RIGHT TO REJECT**

This RFP is not a contract or commitment of any kind and does not commit TLCPL to award an exclusive opportunity or commit to pay for any cost incurred in submission of a proposal. TLCPL, at its sole discretion, reserves the right to accept or reject, in whole or in part, proposals received in response to this request, to negotiate with any qualified source, or to cancel in whole or in part this RFP. All proposals will become the property of the Library.

## **7.0 AGREEMENT**

The selected Operator will be offered a multi-year lease, which will be negotiated in good faith to ensure compliance and alignment with project goals.

## **8.0 EXHIBITS**

1. **Exhibit A:** Fixtures Furniture and Equipment (FF&E)
2. **Exhibit B:** Café Floor Plans

---

END OF RFP

## EXHIBIT A: Fixtures, Furniture, and Equipment

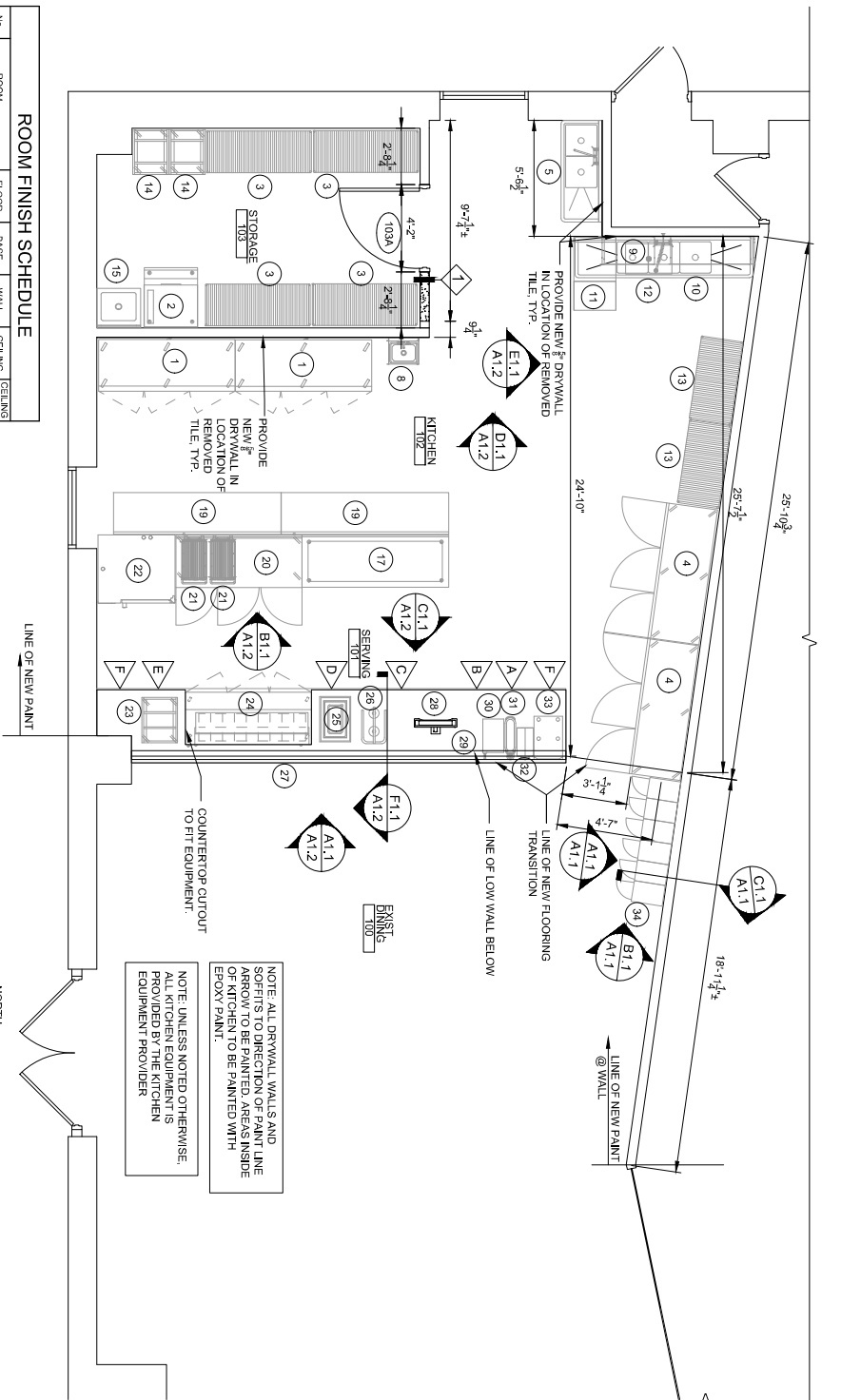
Exhibit A				
FF&E Schedule				
Quantity	Description	Model Number	Serial Number	Condition
1	Primo Planetary Mixer	PM-20	21122520037	Good
2	Rapid Cook Oven	e2SDXMU6SNU2CUS	2202213092489	Good
1	Refrigerator Work top	TWT-72-HC	10447755	Good
1	Sandwich / Salad Prep Refrigerator	TSSU-72-18-HC	10447789	Good
1	Hot Well Drop In	N8717-D	2112820101805	Good
1	Coffee Brewer	34800.0017	SNG0099513	Good
1	Coffee Grinder	35600.002	MHG0055744	Good
1	Ice and Water Dispenser	HID312A-1A	22061320012106	Good
2	Combi Oven, Electric	C4eT620ES-N	VS22204705	Good
1	Dishwasher, Undercounter	DISHSTAR HT-E-SEER	22F407243	Good
1	Three (3) Compartment Sink	BKS-3-18-12-24TS	N/A	Good
1	Overshelf	BKWS-1624-PR	N/A	Good
8	Wire Shelving	N/A	N/A	Good
2	Universal Pan Rack	N/A	N/A	
2	Work Table, STN Steel top	SVTR5-9624	N/A	Good
1	Work Table, STN Steel top	SVTR5-8430	N/A	Good
1	Bun/ Sheet Pan Rack	430A	N/A	Good
3	Reach-in Refrigerator	MBF8508GR	MBF8508GRAUS1T0 322021200C4009	Good
1	Reach-in Freezer	SEAG-SB81F	SEAG-SB81F21251503	Good
4	Plates round small 4	N/A	N/A	Good
44	Plates medium	N/A	N/A	Good

41	Plates large	N/A	N/A	Good
67	Bowls 2 sizes (soup)	N/A	N/A	Good
25	Coffee Mugs	N/A	N/A	Good
15	Plastic cups (ice-tea)	N/A	N/A	Good
40	Silverware (forks, spoons)	N/A	N/A	Good
10	Mixing Bowls	N/A	N/A	Good
8	Colander	N/A	N/A	Good
8	Plastic Cambro 8qt.	N/A	N/A	Good
3	Plastic Cambro 12qt.	N/A	N/A	Good
35	Plastic 1/3 pan	N/A	N/A	Good
23	Plastic 1/6 pan	N/A	N/A	Good
4	Plastic 1/9 pan	N/A	N/A	Good
47	Hotel pans full	N/A	N/A	Good
38	Cookie tray	N/A	N/A	Good
4	Cookie serving plater	N/A	N/A	Good
16	Ladle	N/A	N/A	Good
3	Whisks	N/A	N/A	Good
3	Graders	N/A	N/A	Good
19	Spatula	N/A	N/A	Good
15	Tongs	N/A	N/A	Good
3	Pizza cutter	N/A	N/A	Good
7 bottles, 6 Lids	Plastic quirt bottle with lids	N/A	N/A	Good
7	Cheese/Carrot grader	N/A	N/A	Good
3 small, 1 Large	Rolling pins	N/A	N/A	Good
5 small	Ice cream scoop 3 large	N/A	N/A	Good

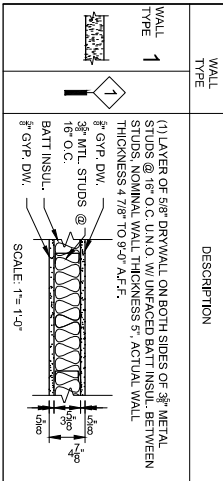
2	Cork opener	N/A	N/A	Good
13	Cookie cutter	N/A	N/A	Good
8	Measuring Cups	N/A	N/A	Good
1	Brush	N/A	N/A	Good
1	Can opener	N/A	N/A	Good
3	Bench scraper	N/A	N/A	Good
15	Measuring spoon	N/A	N/A	Good
1	Perforator	N/A	N/A	Good
1 small	Merging blender	N/A	N/A	Good
1	Dough hook	N/A	N/A	Good
1	Paddle	N/A	N/A	Good
3	Juicer	N/A	N/A	Good
1	Fry punch	N/A	N/A	Good
1	Mandoline	N/A	N/A	Good
2	Salad spinner	N/A	N/A	Good
41	Lids for cambros	N/A	N/A	Good
2	Pizza warming trays	N/A	N/A	Good
6	Pots (soup)	N/A	N/A	Good
3	Planters – tall – wood	N/A	N/A	Good
5	Bistro tables – metal, small, silver with two chairs	N/A	N/A	Good
1	Box full of picture frames	N/A	N/A	Good
1	Signage – participation model	N/A	N/A	Good
1	Signage/letters	N/A	N/A	Good
39	Chairs	N/A	N/A	Good



EXHIBIT B - CAFE FLOOR PLANS

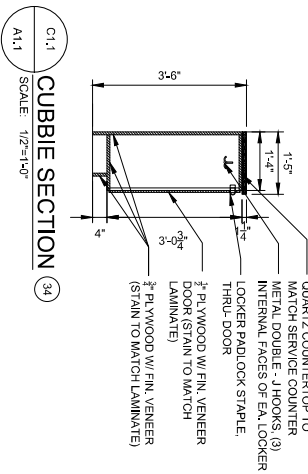


ROOM FINISH SCHEDULE				
No.	ROOM	FLOOR	BASE	WALL
100	EXIST. DINING	1	1	1.3
101	SERVING	2	2	1.3
102	KITCHEN	2	2	1.2.3.4
103	STORAGE	1	1.3	1.2.3
FLOOR: BASE: 1. EXIST. DRYWALL, 1. EXIST. DRYWALL, 2. DRYWALL, 3. EPOXY PAINT, 4. FRP				
WALL: 1. EXIST. DRYWALL, 2. 2X2 SCRUBABLE A.C.T., 3. EPOXY PAINT, 4. FRP				



CUBBIE ELEVATION (34)  
SCALE: 1/2"=1'-0"

CUBBIE ELEVATION (34)  
SCALE: 1/2"=1'-0"

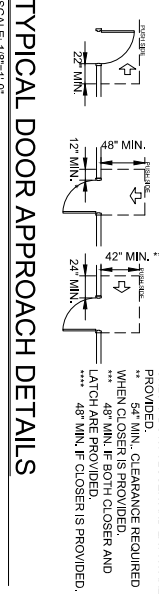
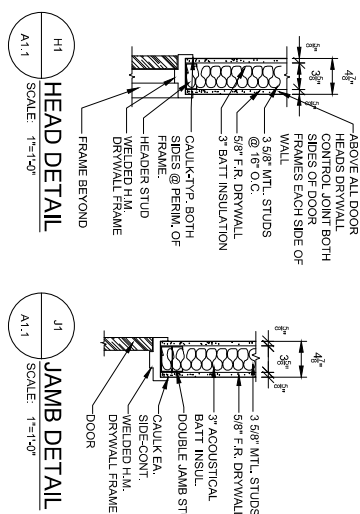


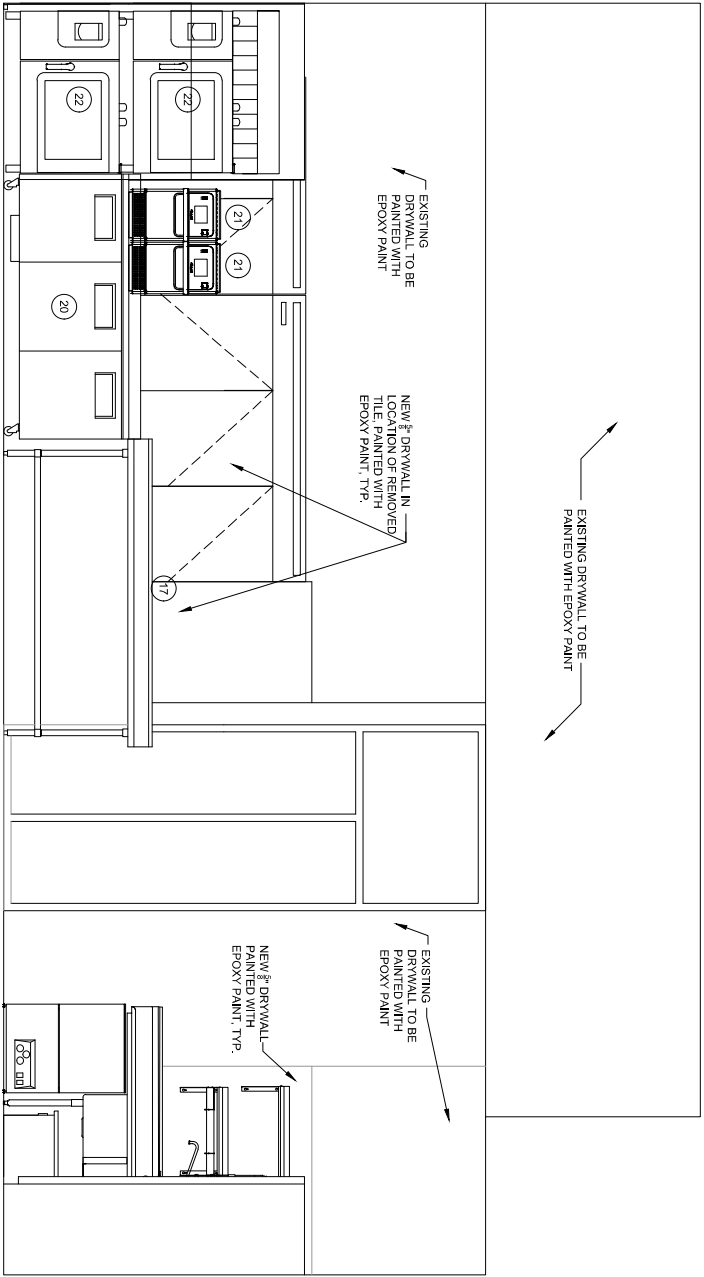
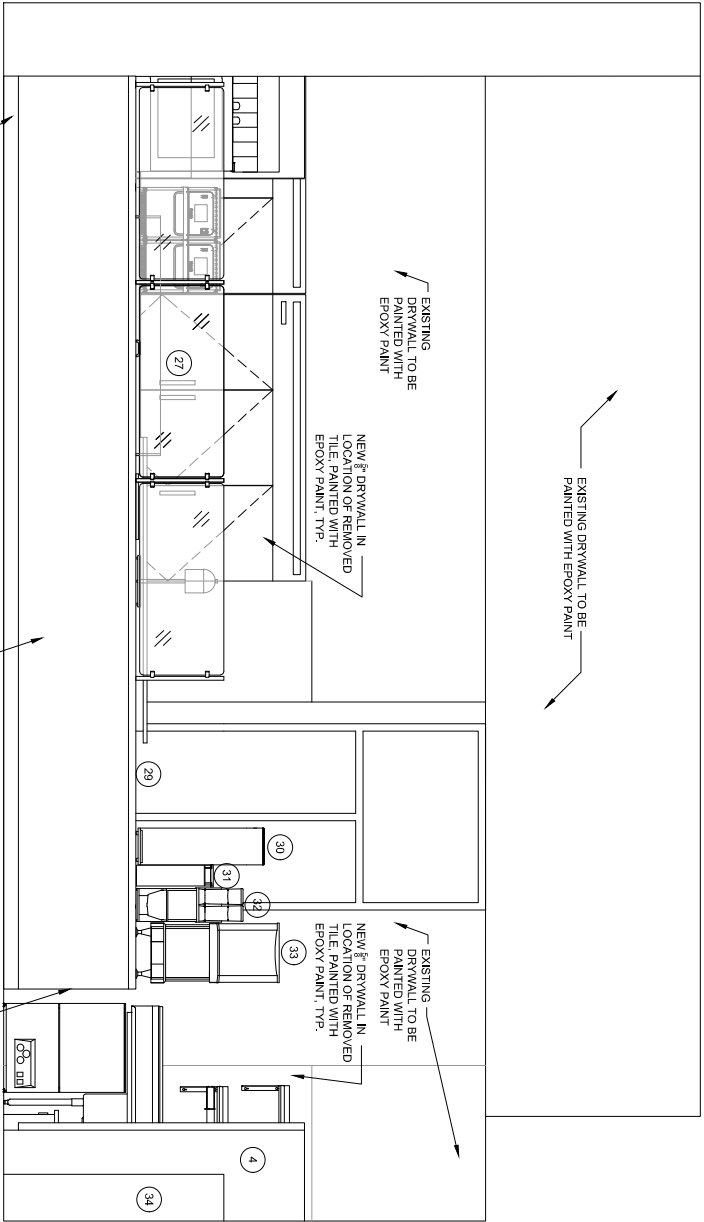
DOOR TYPES  
SCALE: 1/4"=1'-0"

FRAME TYPES  
SCALE: 1/4"=1'-0"

DOOR SCHEDULE									
OPENING No.	DOOR			FRAME			DETAILS		
	SIZE	TYPE	LOUVER	MATERIAL/ FINISH	SIZE	TYPE	HEAD JAMB	UT. Label	SET NO.
100A	3'-10"	7'-0"	1'-3/4"	-	-	-	-	-	-

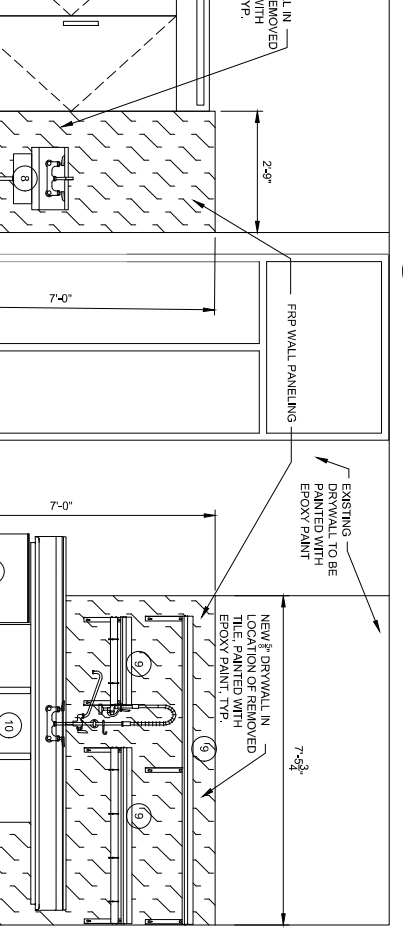
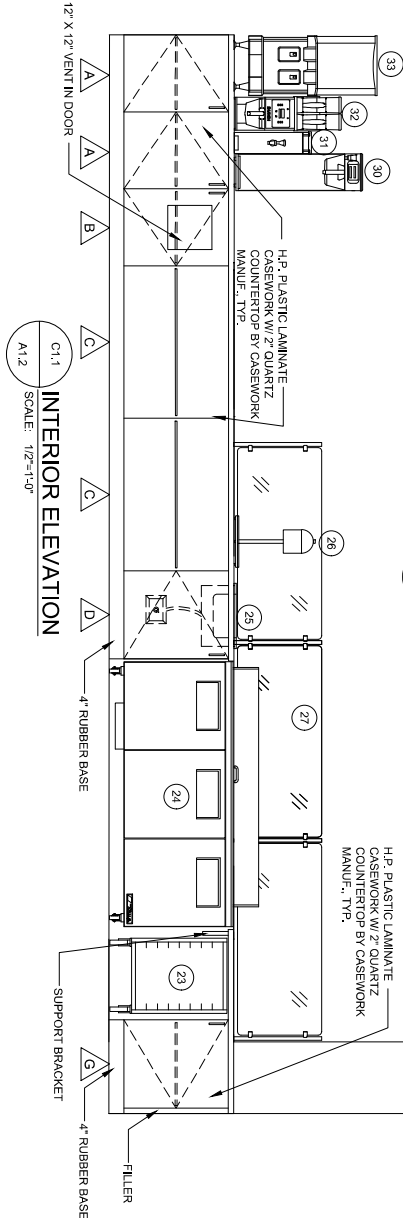
EQUIPMENT LEGEND									
ITEM	NAME	MODEL	MANUFACTURER	MECH/P.L.M.	ELEC.	PROVIDED BY	INSTALLED BY	QUANTITY	NOTES
1	REACH IN REFRIGERATOR	SBR1R	SEBASTE	N/A	115V/60/1-PH, 7.0 AMPS	KITCHEN EQUIP. SUPPLIER	KITCHEN EQUIP. SUPPLIER	2	-
2	ICE MACHINE/BN	CO330SA-1/B330P	SCOTSMAN	1/2" CW, 3/4" INDIRECT TO 3" FD	115V/60/1-PH, 14.3 AMPS	KITCHEN EQUIP. SUPPLIER	KITCHEN EQUIP. SUPPLIER	1	-
3	WIRE SHELVING	FF2480G / FF2472G / FG074G	CROWN	N/A	N/A	KITCHEN EQUIP. SUPPLIER	KITCHEN EQUIP. SUPPLIER	4	-
4	3 DOOR FREEZER	SBR1F	SEBASTE	N/A	115V/60/1-PH, 14.0 AMPS	KITCHEN EQUIP. SUPPLIER	KITCHEN EQUIP. SUPPLIER	2	-
5	2 COMPARTMENT SNK	BKS6-2-18-14-18RS	BR	8" O.C., 3" NPT	N/A	KITCHEN EQUIP. SUPPLIER	KITCHEN EQUIP. SUPPLIER	1	-
7	PLANETARY MIXER	PM-20	MIP GROUP	N/A	115V/60/1-PH, 14 AMPS	KITCHEN EQUIP. SUPPLIER	KITCHEN EQUIP. SUPPLIER	1	LOOSE EQUIPMENT W/ NO PERMANENT LOCATION
8	HAND SINK	BKWS-6-44-10-SS-P-G	BR	4" O.C., 3" NPT	N/A	KITCHEN EQUIP. SUPPLIER	KITCHEN EQUIP. SUPPLIER	1	-
9	WALL SHELVES	BKWS16_PFR	BR	N/A	N/A	KITCHEN EQUIP. SUPPLIER	KITCHEN EQUIP. SUPPLIER	1	-
10	3 COMP SINK / DISH TABLE	BKS-3-18-12-24TS	BR	8" O.C., 3" NPT	N/A	KITCHEN EQUIP. SUPPLIER	KITCHEN EQUIP. SUPPLIER	1	-
11	UNDERCOUNTER DISHWASHER	DISHWASH HT-E-SEER	JACKSON	N/A	208V/60/1-PH, 24.7 AMPS	KITCHEN EQUIP. SUPPLIER	KITCHEN EQUIP. SUPPLIER	1	-
12	GREASE TRAP	4825	ASHLAND	N/A	N/A	KITCHEN EQUIP. SUPPLIER	KITCHEN EQUIP. SUPPLIER	1	-
13	WIRE SHELVING	FF1836G / FG086G	CROWN	N/A	N/A	KITCHEN EQUIP. SUPPLIER	KITCHEN EQUIP. SUPPLIER	2	-
14	SPEED RACK	ALR-20	WMICO	N/A	N/A	KITCHEN EQUIP. SUPPLIER	KITCHEN EQUIP. SUPPLIER	2	-
15	KOP SINK (EXIST)	-	-	N/A	N/A	N/A	N/A	1	-
17	WORK TABLE	S/STRS-8430	BR	N/A	N/A	KITCHEN EQUIP. SUPPLIER	KITCHEN EQUIP. SUPPLIER	1	-
18	FOOD PROCESSOR	RUJ	ROBOT COUPE	N/A	120V/60/1-PH, 7.0 AMPS	KITCHEN EQUIP. SUPPLIER	KITCHEN EQUIP. SUPPLIER	1	LOOSE EQUIPMENT W/ NO PERMANENT LOCATION
19	WORK TABLE	S/STRS-8024	BR	N/A	N/A	KITCHEN EQUIP. SUPPLIER	KITCHEN EQUIP. SUPPLIER	2	-
20	WORKTOP REFRIGERATOR	TWT-72-ADA-HC	TRUE	N/A	115V/60/1-PH, 4.0 AMPS	KITCHEN EQUIP. SUPPLIER	KITCHEN EQUIP. SUPPLIER	1	-
21	RAPID COOK OVEN	ECS	MERRYCHEF	N/A	208V/240V/60/1-PH, 20.0 AMPS	KITCHEN EQUIP. SUPPLIER	KITCHEN EQUIP. SUPPLIER	2	-
22	COMB OVEN W/ VENTLESS HOOD	CA ET 6.20ES/ 60284	CONVOTHERM	N/A	208V/240V/60/1-PH, 50.6 AMPS	KITCHEN EQUIP. SUPPLIER	KITCHEN EQUIP. SUPPLIER	2/1	-
23	HALE SIZE SPEED RACK	430A	CHANNEL	N/A	N/A	KITCHEN EQUIP. SUPPLIER	KITCHEN EQUIP. SUPPLIER	1	-
24	SKAO PREP TABLE	TSSU-72-B-ADA-HC	TRUE	N/A	115V/60/1-PH, 7.2 AMPS	KITCHEN EQUIP. SUPPLIER	KITCHEN EQUIP. SUPPLIER	1	-
25	DROP N HOT WELT	NB7172D	DEL FIELD	N/A	120V/60/1-PH, 8.3 AMPS	KITCHEN EQUIP. SUPPLIER	KITCHEN EQUIP. SUPPLIER	1	-
26	HEAT LAMP	6000A-2	NEMCO	N/A	120V/60/1-PH, 50.0 WATTS	KITCHEN EQUIP. SUPPLIER	KITCHEN EQUIP. SUPPLIER	1	-
27	SNEEZE GUARD	PB89262	VOLLRATH	N/A	N/A	KITCHEN EQUIP. SUPPLIER	KITCHEN EQUIP. SUPPLIER	1	-
28	POS SYSTEM	BY OTHERS	-	N/A	N/A	OWNER	OWNER	1	-
29	SERVICE COUNTER	-	-	N/A	N/A	CONTRACTOR	CONTRACTOR	1	CUSTOM MILLWORK PROVIDED BY CONTRACTOR
30	COFFEE BREWER	3480D 0017	BUUN	N/A	120V/60/1-PH, 2200W, 18.1 AMPS	KITCHEN EQUIP. SUPPLIER	KITCHEN EQUIP. SUPPLIER	1	-
31	TEA DISPENSER	3860D 0002	BUUN	N/A	N/A	KITCHEN EQUIP. SUPPLIER	KITCHEN EQUIP. SUPPLIER	1	-
32	COFFEE GRINDER	3860D 0020	BUUN	N/A	120V/60/1-PH, 11 AMPS	KITCHEN EQUIP. SUPPLIER	KITCHEN EQUIP. SUPPLIER	1	-
33	ICE & WATER DISPENSER	HDS12A-1	SCOTSMAN	N/A	115V/60/1-PH, 7.0 AMPS	KITCHEN EQUIP. SUPPLIER	KITCHEN EQUIP. SUPPLIER	1	-
34	CHECK IN AREA	N/A	N/A	N/A	N/A	CONTRACTOR	CONTRACTOR	1	CUSTOM MILLWORK PROVIDED BY CONTRACTOR





A1.1  
INTERIOR ELEVATION  
SCALE: 1/2"=1'-0"

B1.1  
INTERIOR ELEVATION  
SCALE: 1/2"=1'-0"



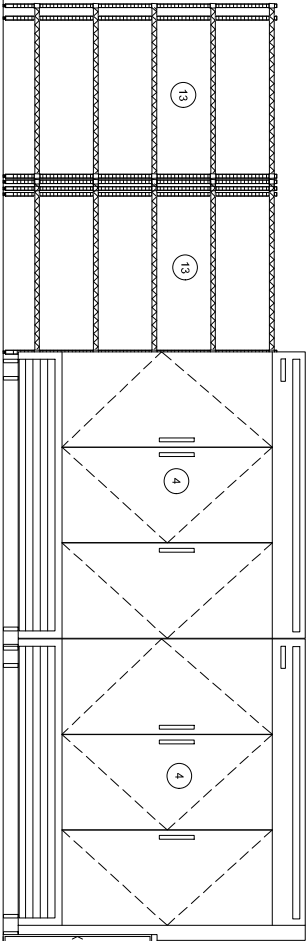
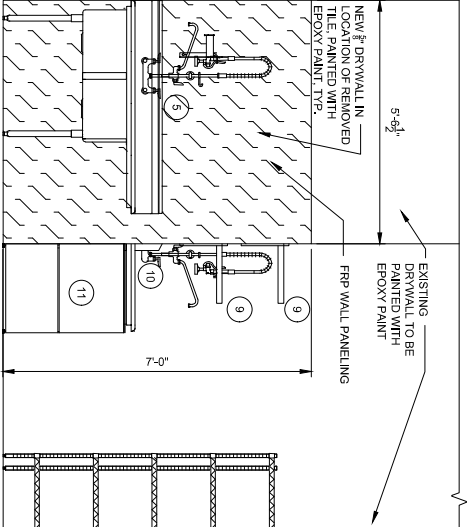
D1.1  
INTERIOR ELEVATION  
SCALE: 1/2"=1'-0"

CASEWORK LEGEND

BASE CABINET	
A	(1) DOOR, (1) ADJ. SHELF 21"W x 33"D x 32"H
B	BASE CABINET (1) VENTED DOOR, (1) ADJ. SHELF 21"W x 33"D x 32"H
C	BASE CABINET NO DOOR, S. (1) ADJ. SHELF 42"W x 33"D x 32"H
D	BASE CABINET (1) DOOR, NO SHELVES 24"W x 33"D x 32"H
E	NOT USED
F	NOT USED
G	BASE CABINET (1) DOOR, (1) ADJ. SHELF 24"W x 24"D x 32"H

CASEWORK NOTES:  
1. PROVIDE FILERS AND FINISHED END PANELS AS SHOWN AND REQUIRED FOR A COMPLETE AND "FINISHED" INSTALLATION.  
2. PROVIDE GROMETS AT OPEN KNEE SPACE, FINAL GROMET LOCATIONS NECESSARY.  
3. PROVIDE GROMETS AT OPEN KNEE SPACE, FINAL GROMET LOCATIONS NECESSARY.  
4. PROVIDE SUPPORT BRACKETS WHERE COUNTERTOP SUPPORT IS NECESSARY.

ADDITIONAL ELEVATION NOTES:  
1. PROVIDE DOOR BLOCKING IN METAL STUD AND DRYWALL WALLS FOR FINISHING INTERIORS, EQUIPMENT, ETC. MAY NOT BE SHOWN ON ELEVATIONS. SEE FLOOR PLANS FOR QUANTITIES AND LOCATIONS.  
2. ALL CASEWORK COUNTERTOPS, METAL SHELVING, ETC. MAY NOT BE SHOWN ON ELEVATIONS. SEE FLOOR PLANS FOR QUANTITIES AND LOCATIONS.  
3. WINDOWS AND DOORS SHOWN FOR REFERENCE ONLY. SEE FLOOR PLANS, SECTIONS, AND WINDOW AND DOOR DETAILS FOR EXACT LOCATIONS AND DETAILS.  
4. ALL CASEWORKS SHOWN MUST BE HIGH IMPACT/DIRTYABLE.  
5. ALL CASEWORK DOORS AND DRAWERS TO BE LOCKABLE.



E1.1  
INTERIOR ELEVATION  
SCALE: 1/2"=1'-0"



**BUEHRER GROUP**  
architecture & engineering, inc.  
314 CONANT ST., MAUMEE, OH 43537 | P: 419.893.9021 F: 419.893.9027 | BUEHRERGROUP.COM

RENOVATIONS  
FOR  
TLCPL MAIN LIBRARY  
CAFE RENOVATION

TOLEDO,

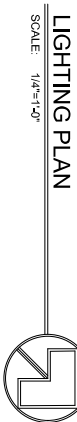
OHIO



REVISION SCHEDULE	
A	
1	
2	
3	
4	
5	
6	
7	
8	
9	
10	
11	
12	
13	
14	
15	
16	
17	
18	
19	
20	
21	
22	
23	
24	
25	
26	
27	
28	
29	
30	
31	
32	
33	
34	
35	
36	
37	
38	
39	
40	
41	
42	
43	
44	
45	
46	
47	
48	
49	
50	
51	
52	
53	
54	
55	
56	
57	
58	
59	
60	
61	
62	
63	
64	
65	
66	
67	
68	
69	
70	
71	
72	
73	
74	
75	
76	
77	
78	
79	
80	
81	
82	
83	
84	
85	
86	
87	
88	
89	
90	
91	
92	
93	
94	
95	
96	
97	
98	
99	
100	

CONSTRUCTION DOCUMENTS

A1.2



3. ALL EXISTING LIGHTING IS LED RATED FOR A KITCHEN APPLICATION

HUBBELL GF20XLU  
P & S 2095x  
COOPER VGF20x  
LEVITON 7899-SGX

**Ⓢ** SAME AS ABOVE WITH 2 OUTLETS IN ONE DOUBLE DUPLEX BACK BOX.

RECESSED 4" ROUND FLOOR BOX WITH CORROSION-RESISTANT COATING. CONTENTS SHALL BE (2) SINGLE 20A GFI RECEPTACLES. FIELD VERIFY EXACT LOCATION WITH ARCHITECT PRIOR TO ROUGH-IN.

HUBBELL  
WIREMOLD

HUBBELL  
WIREMOLD  
C-BSTR4S+BCR,  
4ATCP2R

**DUPLEX SURGE SUPPRESSION OUTLET - 20A - 125V - 3 WIRE GROUND-FLUSH MTD. MH = 16" OR "C" DENOTES 6" ABOVE COUNTER, UNLESS OTHERWISE NOTED. COLOR OF DEVICES TO BE DETERMINED BY OWNER**

P&amp;S

SAFETY SWITCH - SIZE AS NOTED ("3R" RAIN TIGHT, "NF" NON-FUSED, "4X" STAINLESS STEEL)

① JUNCTION BOX

1. QUALITY ASSURANCE: ALL WORK SHALL BE IN ACCORDANCE WITH THE NFPA 70 - NATIONAL ELECTRICAL CODE 2017. ALL NEW AND UTILIZED MATERIALS SHALL BE UL - UNDERWRITERS LABORATORY LISTED, OCCUPATIONAL HEALTH AND SAFETY ASSOCIATION SHALL COMPLY WITH ALL APPLICABLE OSHA STANDARDS.
2. ALL PANEL BOARDS IN THIS SCOPE OF WORK SHALL ALL HAVE LABELED TYPED DIRECTORIES PROVIDED, INDICATING ALL CIRCUITS, AND A COPIES INSERTED INSIDE THE PANEL DOORS.

TO ROUGH IN.

NEUTRAL AND SHARED #12AWG GROUND WIRE, IN 3/4" CONDUIT.

5. ALL 15A AND 20A RECEPTACLES WITHIN 6'-0" OF A SINK SHALL BE GFCI TYPICAL. IN ADDITION, PROVIDE GFCI PROTECTION FOR RECEPTACLES IN KITCHEN AND OTHER AREAS AS REQUIRED BY NEC.

6. ANY DEVICE INDICATED WITH "C" SHALL BE 6" ABOVE THE COUNTER HEIGHT. INDICATES EXISTING ITEM TO BE REMOVED & RELOCATED/REINSTALLED

7. ALL NEW ELECTRICAL WORK IN THE COMMERCIAL KITCHEN SPACE SHALL BE PROTECTED BY GFI BREAKERS WHERE NECESSARY PER NEC 2017 210.8

7.3. HARDWIRED CONNECTIONS TO BE PROTECTED BY SAFETY SWITCHES

8. REFER TO ARCHITECTURAL SHEET A1.1 FOR COMPLETE EQUIPMENT SCHEDULE. NUMBERS INDICATED BY OWNER THAT REQUIRE ELECTRICAL CONNECTION COORDINATE CONNECTION TYPES

OF ALL FOOD SERVICE EQUIPMENT PRIOR TO ROUGH INS.




DEDICATED FOR #18 FOOD PROCESSOR  
POWER ORIGINATES AT WALL. ROUTE AND SECURE  
MENT ALONG FLOOR W/ SURFACE MOUNTED OUTLET  
BOX. COORDINATE INSTALLATION AND EXACT  
LOCATIONS W/ EQUIPMENT PRIOR TO ROUGH-IN.

SCALE: 1/4"=1'-0"

**PROVIDE GFI BREAKER**

**PROVIDE GFI BREAKER**

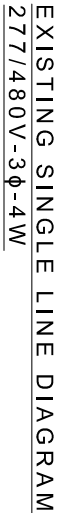
 **B** EXISTING TV OUTLET TO REMAIN

**C RUN FEEDERS IN MILLWORK. COORDINATE PRIOR TO ROUGH-IN**

**D SAFETY SWITCH TO BE MOUNTED UNDERNEATH COUNTER OF CASEWORK.**

**SAFETY SWITCHES TO BE MOUNTED ON WALL ADJACENT TO COMBI-OVENS**

**F** PANELS LOCATED TO NORTHEAST OF RENOVATION SITE BY RESTROOMS



COMBINATION VOICE/DATA JACK. MH=16" UNLESS NOTED OTHERWISE. PROVIDE ROUGH-IN BOX WITH BLANK COVER AND 1-1/4" CONDUIT STUBBED INTO CEILING ABOVE

[illegible]

NOT TO SCALE




EMSTING TRAINING SCHEDULE											
PANEL 1 - 1				WORKING SCHEDULE				TOTAL			
DATE: 12/07/2015				DATE: 12/07/2015				DATE: 12/07/2015			
LOAD	WTS	REP	SEC	LOAD	WTS	REP	SEC	LOAD	WTS	REP	SEC
1 X RECEPT	800	20	30	2 X 500	800	20	30	2 X 500	800	20	30
2 X RECEPT	800	20	30	2 X 500	800	20	30	2 X 500	800	20	30
3 X RECEPT	800	20	30	2 X 500	800	20	30	2 X 500	800	20	30
4 X RECEPT	800	20	30	2 X 500	800	20	30	2 X 500	800	20	30
5 X RECEPT	800	20	30	2 X 500	800	20	30	2 X 500	800	20	30
6 X RECEPT	800	20	30	2 X 500	800	20	30	2 X 500	800	20	30
7 X RECEPT	800	20	30	2 X 500	800	20	30	2 X 500	800	20	30
8 X RECEPT	800	20	30	2 X 500	800	20	30	2 X 500	800	20	30
9 X RECEPT	800	20	30	2 X 500	800	20	30	2 X 500	800	20	30
10 X RECEPT	800	20	30	2 X 500	800	20	30	2 X 500	800	20	30
11 X RECEPT	800	20	30	2 X 500	800	20	30	2 X 500	800	20	30
12 X RECEPT	800	20	30	2 X 500	800	20	30	2 X 500	800	20	30
13 X RECEPT	800	20	30	2 X 500	800	20	30	2 X 500	800	20	30
14 X RECEPT	800	20	30	2 X 500	800	20	30	2 X 500	800	20	30
15 X RECEPT	800	20	30	2 X 500	800	20	30	2 X 500	800	20	30
16 X RECEPT	800	20	30	2 X 500	800	20	30	2 X 500	800	20	30
17 X RECEPT	800	20	30	2 X 500	800	20	30	2 X 500	800	20	30
18 X RECEPT	800	20	30	2 X 500	800	20	30	2 X 500	800	20	30
19 X RECEPT	800	20	30	2 X 500	800	20	30	2 X 500	800	20	30
20 X RECEPT	800	20	30	2 X 500	800	20	30	2 X 500	800	20	30
21 X RECEPT	800	20	30	2 X 500	800	20	30	2 X 500	800	20	30
22 X RECEPT	800	20	30	2 X 500	800	20	30	2 X 500	800	20	30
23 X RECEPT	800	20	30	2 X 500	800	20	30	2 X 500	800	20	30
24 X RECEPT	800	20	30	2 X 500	800	20	30	2 X 500	800	20	30
25 X RECEPT	800	20	30	2 X 500	800	20	30	2 X 500	800	20	30
26 X RECEPT	800	20	30	2 X 500	800	20	30	2 X 500	800	20	30
27 X RECEPT	800	20	30	2 X 500	800	20	30	2 X 500	800	20	30
28 X RECEPT	800	20	30	2 X 500	800	20	30	2 X 500	800	20	30
29 X RECEPT	800	20	30	2 X 500	800	20	30	2 X 500	800	20	30
30 X RECEPT	800	20	30	2 X 500	800	20	30	2 X 500	800	20	30
31 X RECEPT	800	20	30	2 X 500	800	20	30	2 X 500	800	20	30
32 X RECEPT	800	20	30	2 X 500	800	20	30	2 X 500	800	20	30
33 X RECEPT	800	20	30	2 X 500	800	20	30	2 X 500	800	20	30
34 X RECEPT	800	20	30	2 X 500	800	20	30	2 X 500	800	20	30
35 X RECEPT	800	20	30	2 X 500	800	20	30	2 X 500	800	20	30
36 X RECEPT	800	20	30	2 X 500	800	20	30	2 X 500	800	20	30
37 X RECEPT	800	20	30	2 X 500	800	20	30	2 X 500	800	20	30
38 X RECEPT	800	20	30	2 X 500	800	20	30	2 X 500	800	20	30
39 X RECEPT	800	20	30	2 X 500	800	20	30	2 X 500	800	20	30
40 X RECEPT	800	20	30	2 X 500	800	20	30	2 X 500	800	20	30
41 X RECEPT	800	20	30	2 X 500	800	20	30	2 X 500	800	20	30
42 X RECEPT	800	20	30	2 X 500	800	20	30	2 X 500	800	20	30
43 X RECEPT	800	20	30	2 X 500	800	20	30	2 X 500	800	20	30
44 X RECEPT	800	20	30	2 X 500	800	20	30	2 X 500	800	20	30
45 X RECEPT	800	20	30	2 X 500	800	20	30	2 X 500	800	20	30
46 X RECEPT	800	20	30	2 X 500	800	20	30	2 X 500	800	20	30
47 X RECEPT	800	20	30	2 X 500	800	20	30	2 X 500	800	20	30
48 X RECEPT	800	20	30	2 X 500	800	20	30	2 X 500	800	20	30
49 X RECEPT	800	20	30	2 X 500	800	20	30	2 X 500	800	20	30
50 X RECEPT	800	20	30	2 X 500	800	20	30	2 X 500	800	20	30
51 X RECEPT	800	20	30	2 X 500	800	20	30	2 X 500	800	20	30
52 X RECEPT	800	20	30	2 X 500	800	20	30	2 X 500	800	20	30
53 X RECEPT	800	20	30	2 X 500	800	20	30	2 X 500	800	20	30
54 X RECEPT	800	20	30	2 X 500	800	20	30	2 X 500	800	20	30
55 X RECEPT	800	20	30	2 X 500	800	20	30	2 X 500	800	20	30
56 X RECEPT	800	20	30	2 X 500	800	20	30	2 X 500	800	20	30
57 X RECEPT	800	20	30	2 X 500	800	20	30	2 X 500	800	20	30
58 X RECEPT	800	20	30	2 X 500	800	20	30	2 X 500	800	20	30
59 X RECEPT	800	20	30	2 X 500	800	20	30	2 X 500	800	20	30
60 X RECEPT	800	20	30	2 X 500	800	20	30	2 X 500	800	20	30
61 X RECEPT	800	20	30	2 X 500	800	20	30	2 X 500	800	20	30
62 X RECEPT	800	20	30	2 X 500	800	20	30	2 X 500	800	20	30
63 X RECEPT	800	20	30	2 X 500	800	20	30	2 X 500	800	20	30
64 X RECEPT	800	20	30	2 X 500	800	20	30	2 X 500	800	20	30
65 X RECEPT	800	20	30	2 X 500	800	20	30	2 X 500	800	20	30
66 X RECEPT	800	20	30	2 X 500	800	20	30	2 X 500	800	20	30
67 X RECEPT	800	20	30	2 X 500	800	20	30	2 X 500	800	20	30
68 X RECEPT	800	20	30	2 X 500	800	20	30	2 X 500	800	20	30
69 X RECEPT	800	20	30	2 X 500	800	20	30	2 X 500	800	20	30
70 X RECEPT	800	20	30	2 X 500	800	20	30	2 X 500	800	20	30
71 X RECEPT	800	20	30	2 X 500	800	20	30	2 X 500	800	20	30
72 X RECEPT	800	20	30	2 X 500	800	20	30	2 X 500	800	20	30
73 X RECEPT	800	20	30	2 X 500	800	20	30	2 X 500	800	20	30
74 X RECEPT	800	20	30	2 X 500	800	20	30	2 X 500	800	20	30
75 X RECEPT	800	20	30	2 X 500	800	20	30	2 X 500	800	20	30
76 X RECEPT	800	20	30	2 X 500	800	20	30	2 X 500	800	20	30
77 X RECEPT	800	20	30	2 X 500	800	20	30	2 X 500	800	20	30
78 X RECEPT	800	20	30	2 X 500	800	20	30	2 X 500	800	20	30
79 X RECEPT	800	20	30	2 X 500	800	20	30	2 X 500	800	20	30
80 X RECEPT	800	20	30	2 X 500	800	20	30	2 X 500	800	20	30
81 X RECEPT	800	20	30	2 X 500	800	20	30	2 X 500	800	20	30
82 X RECEPT	800	20	30	2 X 500	800	20	30	2 X 500	800	20	30
83 X RECEPT	800	20	30	2 X 500	800	20	30	2 X 500	800	20	30
84 X RECEPT	800	20	30	2 X 500	800	20	30	2 X 500	800	20	30
85 X RECEPT	800	20	30	2 X 500	800	20	30	2 X 500	800	20	30
86 X RECEPT	800	20	30	2 X 500	800	20	30	2 X 500	800	20	30
87 X RECEPT	800	20	30	2 X 500	800	20	30	2 X 500	800	20	30
88 X RECEPT	800	20	30	2 X 500	800	20	30	2 X 500	800	20	30
89 X RECEPT	800	20	30	2 X 500	800	20	30	2 X 500	800	20	30
90 X RECEPT	800	20	30	2 X 500	800	20	30	2 X 500	800	20	30
91 X RECEPT	800	20	30	2 X 500	800	20	30	2 X 500	800	20	30
92 X RECEPT	800	20	30	2 X 500	800	20	30	2 X 500	800	20	30
93 X RECEPT	800	20	30	2 X 500	800	20	30	2 X 500	800	20	30
94 X RECEPT	800	20	30	2 X 500	800	20	30	2 X 500	800	20	30
95 X RECEPT	800	20	30	2 X 500	800	20	30	2 X 500	800	20	30
96 X RECEPT	800	20	30	2 X 500	800	20	30	2 X 500	800	20	30
97 X RECEPT	800	20	30	2 X 500	800	20	30	2 X 500	800	20	30
98 X RECEPT	800	20	30	2 X 500	800	20	30	2 X 500	800	20	30
99 X RECEPT	800	20	30	2 X 500	800	20	30	2 X 500	800	20	30
100 X RECEPT	800	20	30	2 X 500	800	20	30	2 X 500	800	20	30
TOTAL	20.3	WTS	SEC	TOTAL	20.3	WTS	SEC	TOTAL	20.3	WTS	SEC

EXISTING PANELBOARD SCHEDULE												
PANEL NO.	PANEL TYPE	PANEL VOLTAGE	CIRCUIT BREAKERS (Amps) & Fuses (Amps)									
			120V	240V	480V	600V	800V	1000V	1200V	1500V	2000V	2500V
1	MAIN	480V	100	100	100	100	100	100	100	100	100	100
2	FEED	480V	100	100	100	100	100	100	100	100	100	100
3	FEED	480V	100	100	100	100	100	100	100	100	100	100
4	FEED	480V	100	100	100	100	100	100	100	100	100	100
5	FEED	480V	100	100	100	100	100	100	100	100	100	100
6	FEED	480V	100	100	100	100	100	100	100	100	100	100
7	FEED	480V	100	100	100	100	100	100	100	100	100	100
8	FEED	480V	100	100	100	100	100	100	100	100	100	100
9	FEED	480V	100	100	100	100	100	100	100	100	100	100
10	FEED	480V	100	100	100	100	100	100	100	100	100	100
11	FEED	480V	100	100	100	100	100	100	100	100	100	100
12	FEED	480V	100	100	100	100	100	100	100	100	100	100
13	FEED	480V	100	100	100	100	100	100	100	100	100	100
14	FEED	480V	100	100	100	100	100	100	100	100	100	100
15	FEED	480V	100	100	100	100	100	100	100	100	100	100
16	FEED	480V	100	100	100	100	100	100	100	100	100	100
17	FEED	480V	100	100	100	100	100	100	100	100	100	100
18	FEED	480V	100	100	100	100	100	100	100	100	100	100
19	FEED	480V	100	100	100	100	100	100	100	100	100	100
20	FEED	480V	100	100	100	100	100	100	100	100	100	100
21	FEED	480V	100	100	100	100	100	100	100	100	100	100
22	FEED	480V	100	100	100	100	100	100	100	100	100	100
23	FEED	480V	100	100	100	100	100	100	100	100	100	100
24	FEED	480V	100	100	100	100	100	100	100	100	100	100
25	FEED	480V	100	100	100	100	100	100	100	100	100	100
26	FEED	480V	100	100	100	100	100	100	100	100	100	100
27	FEED	480V	100	100	100	100	100	100	100	100	100	100
28	FEED	480V	100	100	100	100	100	100	100	100	100	100
29	FEED	480V	100	100	100	100	100	100	100	100	100	100
30	FEED	480V	100	100	100	100	100	100	100	100	100	100
31	FEED	480V	100	100	100	100	100	100	100	100	100	100
32	FEED	480V	100	100	100	100	100	100	100	100	100	100
TOTAL			30.4 KW									
GROSS A			30.4 KW									

EASTING PANELBOARD SCHEDULE												
PANEL - 1P, 2P, 3P, 4P, 5P, 6P, 7P, 8P, 9P, 10P, 12P, 15P, 20P, 25P, 30P, 35P, 40P, 45P, 50P, 60P, 70P, 80P, 90P, 100P, 125P, 150P, 175P, 200P, 225P, 250P, 275P, 300P, 325P, 350P, 375P, 400P, 450P, 500P, 550P, 600P, 650P, 700P, 750P, 800P, 850P, 900P, 950P, 1000P, 1100P, 1200P, 1300P, 1400P, 1500P, 1600P, 1700P, 1800P, 1900P, 2000P, 2200P, 2400P, 2600P, 2800P, 3000P, 3200P, 3400P, 3600P, 3800P, 4000P, 4200P, 4400P, 4600P, 4800P, 5000P, 5200P, 5400P, 5600P, 5800P, 6000P, 6200P, 6400P, 6600P, 6800P, 7000P, 7200P, 7400P, 7600P, 7800P, 8000P, 8200P, 8400P, 8600P, 8800P, 9000P, 9200P, 9400P, 9600P, 9800P, 10000P, 10500P, 11000P, 11500P, 12000P, 12500P, 13000P, 13500P, 14000P, 14500P, 15000P, 15500P, 16000P, 16500P, 17000P, 17500P, 18000P, 18500P, 19000P, 19500P, 20000P, 20500P, 21000P, 21500P, 22000P, 22500P, 23000P, 23500P, 24000P, 24500P, 25000P, 25500P, 26000P, 26500P, 27000P, 27500P, 28000P, 28500P, 29000P, 29500P, 30000P, 30500P, 31000P, 31500P, 32000P, 32500P, 33000P, 33500P, 34000P, 34500P, 35000P, 35500P, 36000P, 36500P, 37000P, 37500P, 38000P, 38500P, 39000P, 39500P, 40000P, 40500P, 41000P, 41500P, 42000P, 42500P, 43000P, 43500P, 44000P, 44500P, 45000P, 45500P, 46000P, 46500P, 47000P, 47500P, 48000P, 48500P, 49000P, 49500P, 50000P, 50500P, 51000P, 51500P, 52000P, 52500P, 53000P, 53500P, 54000P, 54500P, 55000P, 55500P, 56000P, 56500P, 57000P, 57500P, 58000P, 58500P, 59000P, 59500P, 60000P, 60500P, 61000P, 61500P, 62000P, 62500P, 63000P, 63500P, 64000P, 64500P, 65000P, 65500P, 66000P, 66500P, 67000P, 67500P, 68000P, 68500P, 69000P, 69500P, 70000P, 70500P, 71000P, 71500P, 72000P, 72500P, 73000P, 73500P, 74000P, 74500P, 75000P, 75500P, 76000P, 76500P, 77000P, 77500P, 78000P, 78500P, 79000P, 79500P, 80000P, 80500P, 81000P, 81500P, 82000P, 82500P, 83000P, 83500P, 84000P, 84500P, 85000P, 85500P, 86000P, 86500P, 87000P, 87500P, 88000P, 88500P, 89000P, 89500P, 90000P, 90500P, 91000P, 91500P, 92000P, 92500P, 93000P, 93500P, 94000P, 94500P, 95000P, 95500P, 96000P, 96500P, 97000P, 97500P, 98000P, 98500P, 99000P, 99500P, 100000P, 100500P, 101000P, 101500P, 102000P, 102500P, 103000P, 103500P, 104000P, 104500P, 105000P, 105500P, 106000P, 106500P, 107000P, 107500P, 108000P, 108500P, 109000P, 109500P, 110000P, 110500P, 111000P, 111500P, 112000P, 112500P, 113000P, 113500P, 114000P, 114500P, 115000P, 115500P, 116000P, 116500P, 117000P, 117500P, 118000P, 118500P, 119000P, 119500P, 120000P, 120500P, 121000P, 121500P, 122000P, 122500P, 123000P, 123500P, 124000P, 124500P, 125000P, 125500P, 126000P, 126500P, 127000P, 127500P, 128000P, 128500P, 129000P, 129500P, 130000P, 130500P, 131000P, 131500P, 132000P, 132500P, 133000P, 133500P, 134000P, 134500P, 135000P, 135500P, 136000P, 136500P, 137000P, 137500P, 138000P, 138500P, 139000P, 139500P, 140000P, 140500P, 141000P, 141500P, 142000P, 142500P, 143000P, 143500P, 144000P, 144500P, 145000P, 145500P, 146000P, 146500P, 147000P, 147500P, 148000P, 148500P, 149000P, 149500P, 150000P, 150500P, 151000P, 151500P, 152000P, 152500P, 153000P, 153500P, 154000P, 154500P, 155000P, 155500P, 156000P, 156500P, 157000P, 157500P, 158000P, 158500P, 159000P, 159500P, 160000P, 160500P, 161000P, 161500P, 162000P, 162500P, 163000P, 163500P, 164000P, 164500P, 165000P, 165500P, 166000P, 166500P, 167000P, 167500P, 168000P, 168500P, 169000P, 169500P, 170000P, 170500P, 171000P, 171500P, 172000P, 172500P, 173000P, 173500P, 174000P, 174500P, 175000P, 175500P, 176000P, 176500P, 177000P, 177500P, 178000P, 178500P, 179000P, 179500P, 180000P, 180500P, 181000P, 181500P, 182000P, 182500P, 183000P, 183500P, 184000P, 184500P, 185000P, 185500P, 186000P, 186500P, 187000P, 187500P, 188000P, 188500P, 189000P, 189500P, 190000P, 190500P, 191000P, 191500P, 192000P, 192500P, 193000P, 193500P, 194000P, 194500P, 195000P, 195500P, 196000P, 196500P, 197000P, 197500P, 198000P, 198500P, 199000P, 199500P, 200000P, 200500P, 201000P, 201500P, 202000P, 202500P, 203000P, 203500P, 204000P, 204500P, 205000P, 205500P, 206000P, 206500P, 207000P, 207500P, 208000P, 208500P, 209000P, 209500P, 210000P, 210500P, 211000P, 211												

[illegible]

	<b>REVISION SCHEDULE</b>
	JOB NUMBER: 210989 ISSUE DATE: 03/24/22 CONSTRUCTION DOCUMENTS